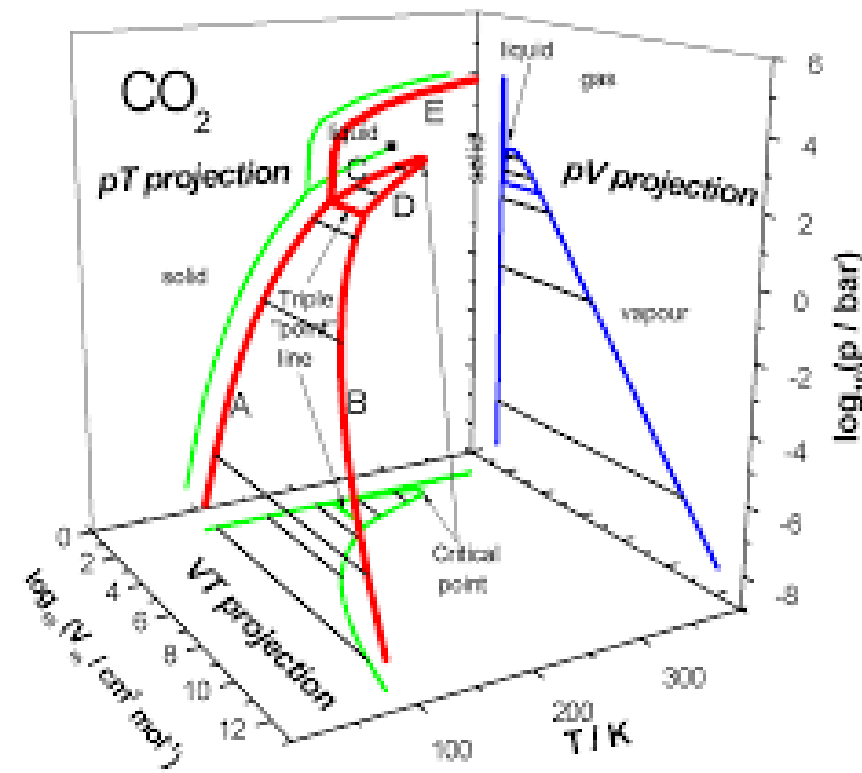


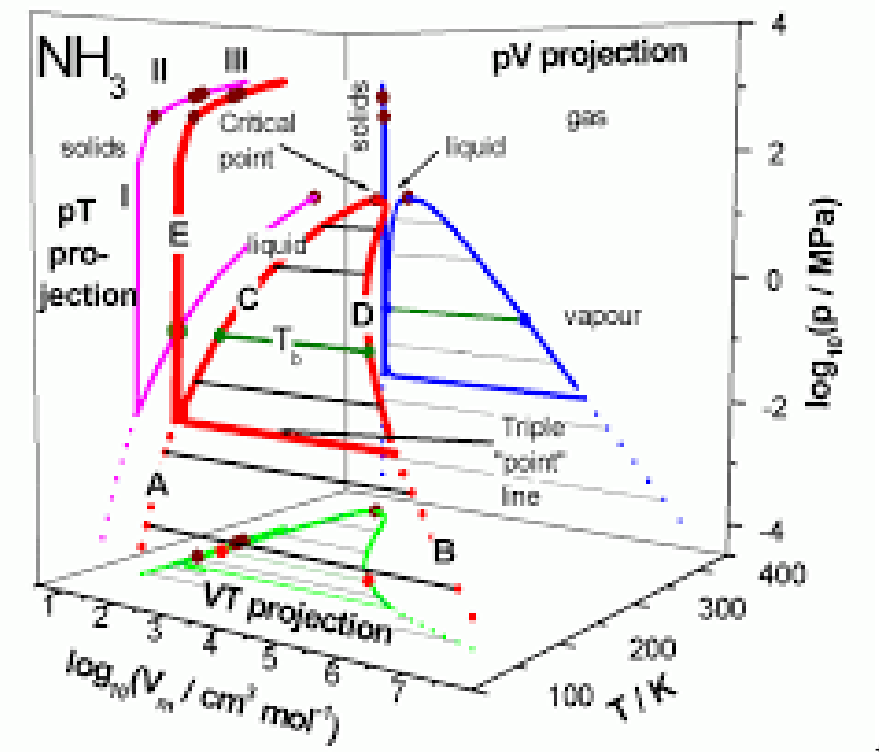


SOURCES OF CO<sub>2</sub>

- CO<sub>2</sub> / person
- CO<sub>2</sub> / car
- Methane / cow
- Fossil fuel / cow
- CO<sub>2</sub> CONCRETE / burning of limestone



#.



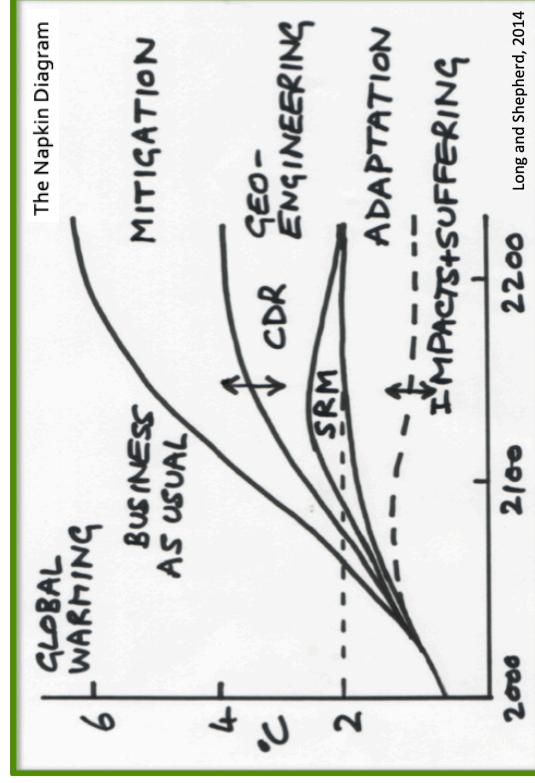
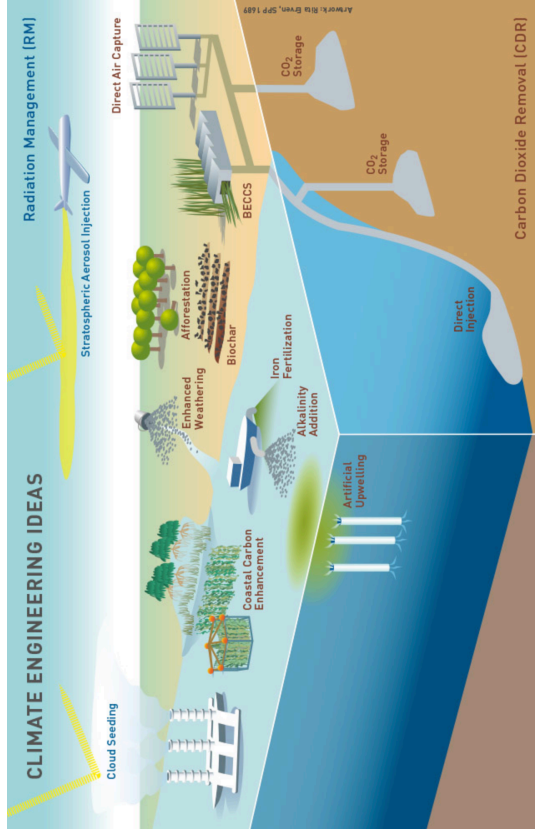
#.

Group →	1	2	3	4	5	6	7	8	9	10	11	12	13	14	15	16	17	18
Period ↓	1	2	3	4	5	6	7	8	9	10	11	12	13	14	15	16	17	18
1	1 H																	2 He
2	3 Li	4 Be											5 B	6 C	7 N	8 O	9 F	10 Ne
3	11 Na	12 Mg											13 Al	14 Si	15 P	16 S	17 Cl	18 Ar
4	19 K	20 Ca	21 Sc	22 Ti	23 V	24 Cr	25 Mn	26 Fe	27 Co	28 Ni	29 Cu	30 Zn	31 Ga	32 Ge	33 As	34 Se	35 Br	36 Kr
5	37 Rb	38 Sr	39 Y	40 Zr	41 Nb	42 Mo	43 Tc	44 Ru	45 Rh	46 Pd	47 Ag	48 Cd	49 In	50 Sn	51 Sb	52 Te	53 I	54 Xe
6	55 Cs	56 Ba	57 La *	72 Hf	73 Ta	74 W	75 Re	76 Os	77 Ir	78 Pt	79 Au	80 Hg	81 Tl	82 Pb	83 Bi	84 Po	85 At	86 Rn
7	87 Fr	88 Ra	89 Ac *	104 Rf *	105 Db	106 Sg	107 Bh	108 Hs	109 Mt	110 Ds	111 Rg	112 Cn	113 Nh	114 Fl	115 Mc	116 Lv	117 Ts	118 Og
				* 58 Ce	59 Pr	60 Nd	61 Pm	62 Sm	63 Eu	64 Gd	65 Tb	66 Dy	67 Ho	68 Er	69 Tm	70 Yb	71 Lu	
				* 90 Th	91 Pa	92 U	93 Np	94 Pu	95 Am	96 Cm	97 Bk	98 Cf	99 Es	100 Fm	101 Md	102 No	103 Lr	

## Community Climate Intervention Strategies Workshop

Save the Date: **February 19–21, 2020** at the NCAR Mesa Laboratory in Boulder

*Motivated by the urgency to holistically evaluate climate intervention strategies.*



### Key Questions of the Workshop:

- How can the research community develop a unified framework to coordinate efforts to holistically evaluate a large collection of possible strategies (mitigation, adaptation, and interventions)? How can UCAR/NCAR best support this effort?
- How can different community efforts be optimally integrated to conduct climate intervention research that is informative for policy and social research purposes?
- What are the outreach and communication needs for stakeholders and the public?
- What are the funding needs for the above efforts?

### Find Out More:

<https://www2.acom.ucar.edu/workshop/community-climate-intervention-strategies-ccis-workshop-2020>

