

Grade distributions ECE298JA Fall 2016

Jont B. Allen, Sarah Robinson
University of Illinois at Urbana-Champaign

December 30, 2016

Abstract

ECE 298JA has been taught twice, first in the Fall of 2015, with 9 students, and again in the Fall of 2016 with 34 students. The website¹ is open to the public. The idea behind the course is to introduce college level mathematics to entering students, who wish a strong background, to help them deal with college level math. In Fall 2016, 25% of the students (8/34) received a grade of A+ (Fig. 1).

Final grade distributions

The course was structured to have lots of material, but graded in a lenient manner, so that everyone would feel in control (not threatened by their grade), so each student would learn the maximum they were ready for. Feedback from the first year (F15) was very positive, and when I see these students on campus, they give very warm and positive comments. Many say they wished they had worked harder (F15) because now they are starting to feel the impact of the course, and they feel they could have gotten more, if they had worked more (e.g., done more of the home works).

They were very happy to hear that there is now a text (class-notes) available (on the website), free for download.

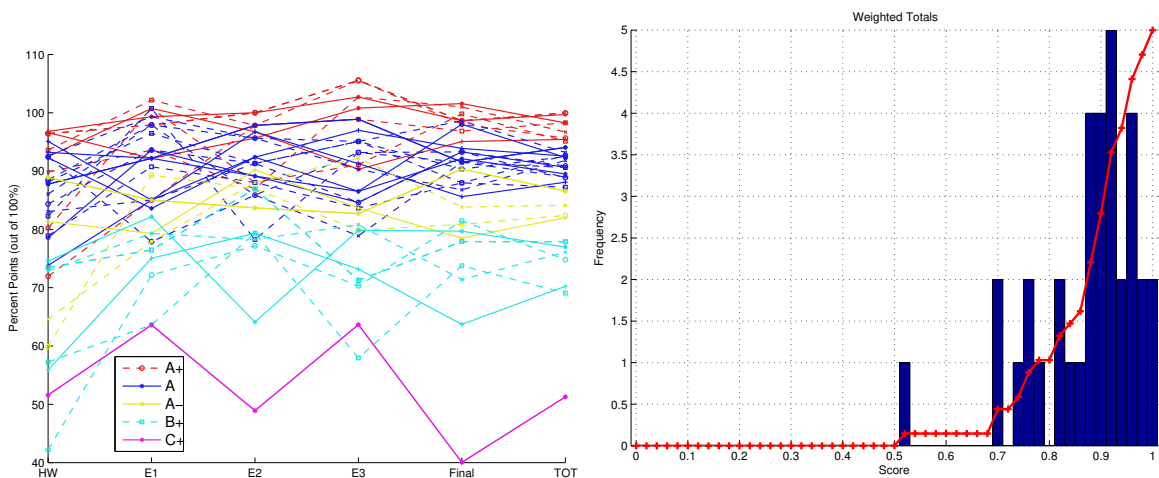


Figure 1: On the left gives the score distribution on the four exams (E1, E2, E3, Final) and the weighted totals “TOT.” There were 8 A+ (red), 15 A (blue), 4 A-, 6 B+ and 1 C+. On the right is a histogram of the grades (blue) and the cumulative curve (red).

¹<http://auditorymodels.org/index.php?n=Courses.ECE298JA-F16>